

Dental Unit Line CARE 22
Top mounted



Clamshell Type Film Viewer
When film viewer is closed, the space of reaching medicine is more open

Personalizing Instrument Handling
Free stretching
Easy reaching

Automatic Check on the Rack
Micro switch with automatic fault checking function
Durable silicon tubes for all instruments

Clean and Sanitary
Silicon pad on the instrument tray—
Protection from chemical corrosion
Autoclavable to avoid cross-infection



With automatic cleaning,
Spend your day leisurely;
With water gurgling,
Enjoy your mind traveling!



Dental Unit Line
CARE 22



Runyes
FOCUS ON DENTAL

Ningbo Runyes Medical Instrument Co.,Ltd.
Add:No. 456, Tonghui Road, Jiangbei Investment & Pioneering Park C, Ningbo
Tel:+86-574-27709922 Fax:+86-574-27709923
Http://www.runyes.com E-mail:runyes@runyes.com

Perfect your clinic!

Runyes
FOCUS ON DENTAL

Version:201301
All Rights Reserved

Dental Unit Line CARE 22
Down mounted



Adjustable Lamp
Light and flexible
Model:D2

Nurse Station
Delay function of suction systems
Anti-clogging system of pipelines

Unique Design of the Basin
Sloping surface
Automatic cleaning

Integrated Arm
Aluminum injection
Adjustable positioning type

Adjustable Mouth Wash Temperature
The water temperature can be adjusted,
which gives the patients more comforts.

Linkage Structure
Chair position can be adjusted;
Chair-back will move as the cushion moves.

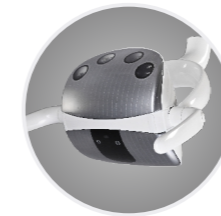
Safety Promise
With protection device to make sure the
operation safety.

Stainless Steel Foot Control
Stepless speed adjustment
Available control of mouth
wash and basin water

Foot Pedal
Durable PU material
Available control of chair up-down movement



FARO LED lamp
—available for option
—Model:D4



LED lamp
—available for option
—Model:D3



Detachable filter for easy cleaning
Dirt separator—avoid jam



Water storage can be taken down and refilled.



Double-joint head setting creates a satisfying
position and is accessible to special patients
such as children.



Luxury Doctor's Chair (For standard
configuration)



Luxury Nurse's Chair (For Option)

Creative Rack
Detachable parts of the rack
Adjustable space from the board

Silicon Tube
Selected material
Durable for years



Dental Unit Standard Specifications and Characteristics

Dental Unit Standard Configuration:		Features
Handpiece tube	3 sets	Adopt imported pipes
Three-way syringe	1 set	Constant water temperature
Mouth wash heating system	1 set	Adjustable range: 30 °C – 45 °C
Suction system	1 set	Time delay function
Strong suction system	1 set	Time delay function
Oral halogen lamp	1 set	8000-15000Lux
Film viewer	1 set	Special clamshell type film viewer
Rotatable side-box	1 set	Available for four-hand operation
Clean water system	1 set	Easy refilling from the top cover of the side box
Air lock type arm	1 set	Electronic controlled air lock switch
Foot control	1 set	New type multi-functional footswitch
Dentist chair	1 piece	Human body engineering design, beautiful and practical
Water and electricity general switch	1 set	Easy for control
Optional:	Italy 3-way syringe/ high and low speed hand piece/ oral camera/ ultrasonic scaler/ LED curing light / fiber optic/LED lamp/monitor holder	

Dental Chair Standard Configuration and Features

Dental Chair Standard Configuration	Features
Power-driven dental chair	1. Linkage system, in line with the principle of human body engineering design, makes patients more comfortable. 2. With safety device to protect the operational safety of doctors.
Cushion and back	Selected PU material, seamless, soft, and easy for cleaning
Digital computer program setting	Three chair position user-defined memory
Integrated PU base	Perfect combination of luxury and steady.

Parameters	Package/ Weight	Packaging Size (carton)
Power supply AC 220V 50Hz/60Hz	Chair	1450x900x935mm
Water supply 0.2 MPa – 0.4MPa	Unit	1610x1130x1340mm
Air supply 0.55MPa – 0.6MPa	Dental unit	N.W. 226KG G.W. 336KG

Clinic layout

